

Congratulations on your purchase of an Arnett® air suspension product. We at Arnett Incorporated are proud to offer a high quality product at the industry's most competitive pricing. Thank you for your confidence in us and our product.

Proper installation is essential to experience and appreciate the benefits of this system. Please take a moment to review these installation instructions before you begin to install these components on your vehicle. The removal and installation of air suspension products should only be performed by a fully qualified, ASE Certified, professional.

It is equally important to be aware of all necessary safety measures while installing your new Air Suspension System. This includes proper lifting and immobilizing of the vehicle and isolation of any stored energy to prevent personal injury or property damage.

"Engineered to Ride, Built to Last®"



WARNING: *The air suspension system is under pressure (up to 10 bar, or 150 lbf/in). Verify pressure has been relieved and disconnect power to the air suspension system prior to disassembly. Do not allow dirt or grease to enter the system. Always wear standard hand, ear, and eye protection when servicing the air suspension system.*

Arnett® is committed to the quality of its products. If you have a question or problem with any Arnett product, please contact Arnett by calling **800-251-8993** during normal business hours or email techassistance@arnottinc.com. (In the EU please call +31 (0)73 7850 580 or email info@arnotteurope.com)

GENERAL INFORMATION:

Reading this manual signifies your agreement to the terms of the general release, waiver of liability, and hold harmless agreement, the full text of which is available at www.arnottinc.com.

- Not to be stored below 5°F (-15°C) and above 122°F (50°C).
- Avoid damage to air lines and cables.
- Removal and installation is only to be performed by fully qualified personnel.
- Use car manufacturer's diagnostic software.

CAUTION: *Damage to the vehicle and air suspension system can be incurred if work is carried out in a manner other than specified in the instructions or in a different sequence.*



To avoid the possibility of short circuits while working with electric components consult your owner's manual on how to disconnect your battery.



Consult your vehicle owner's manual, service manual, or car dealer for the correct jacking points on your vehicle and for additional care, safety and maintenance instructions. Under no circumstances should any work be completed underneath the vehicle if it is not adequately supported, as serious injuries and death can occur.

AIR SPRING REMOVAL

1. RAISE VEHICLE.
2. REMOVE APPLICABLE REAR WHEEL. (FIGURE 1)

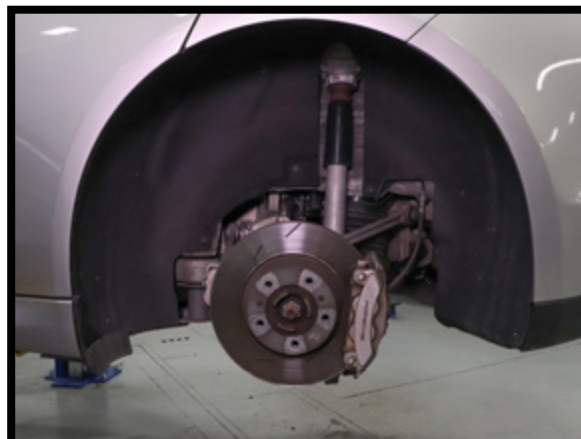


FIGURE 1

3. DISCONNECT THE AIR LINE USING A WRENCH. REMOVE AIR LINE FITTING AND DISCARD. (FIGURES 2, 3, 4)

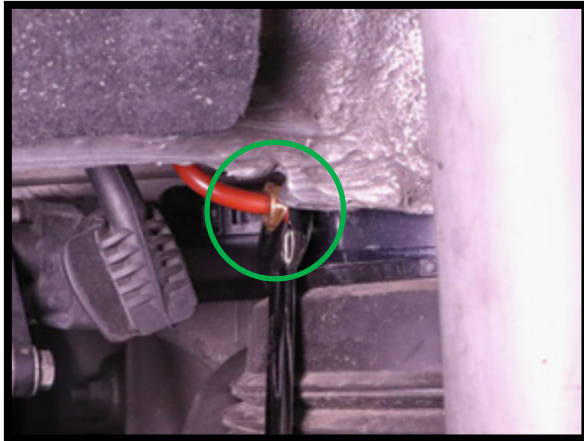


FIGURE 2

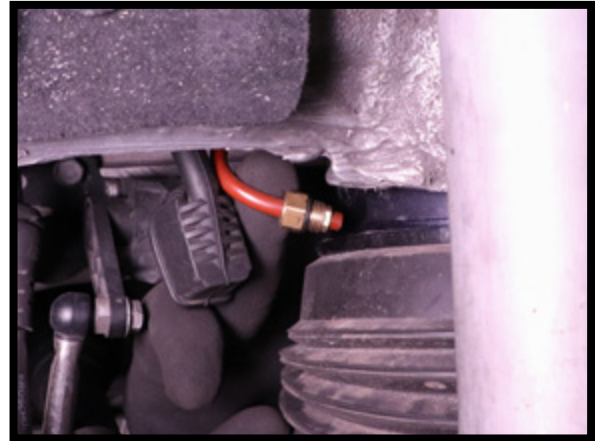


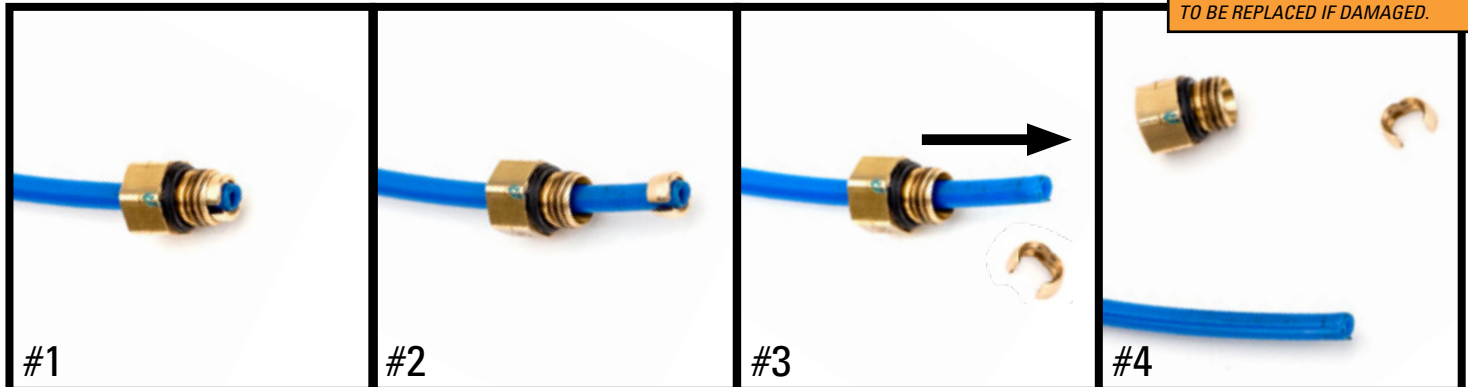
FIGURE 3

REMOVAL



Prior to inserting the existing air line into the new air fitting you will need to remove the old original equipment air line fitting.

NOTE: SCRATCHES AND/OR DEEP CUTS IN THE AIR LINE CAN RESULT IN POSSIBLE LEAKS. INSPECT THE AIR LINE BEFORE INSERTION. AIR LINE NEEDS TO BE REPLACED IF DAMAGED.



#1

OE AIR LINE FITTING

#2

SLIDE THE THREADED PORTION UP THE LINE AND SPREAD THE COLLET OPEN TO REMOVE

#3

SLIDE THE AIR FITTING OFF OF THE AIR LINE

#4

AIR LINE IS READY FOR INSTALLATION

FIGURE 4

4. DISCONNECT THE AIR SPRING ELECTRICAL CONNECTION. (FIGURES 5, 6)

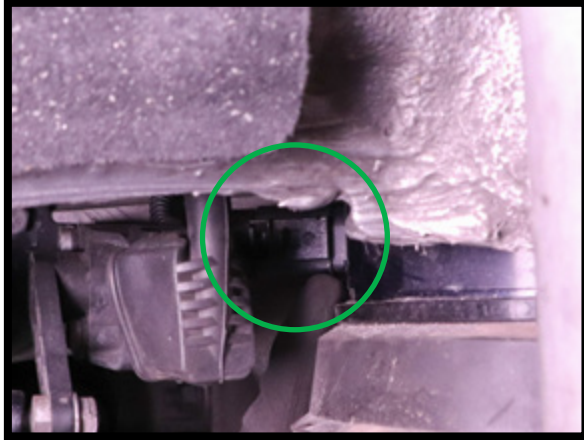


FIGURE 5



FIGURE 6

5. COMPRESS THE AIR SPRING AND REMOVE FROM VEHICLE. (FIGURES 7, 8)

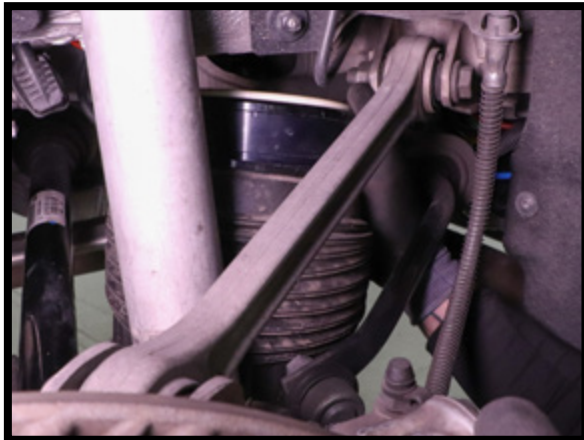


FIGURE 7



FIGURE 8

6. REMOVAL COMPLETE.

AIR SPRING INSTALLATION



Tighten all nuts and bolts to manufacturer's specifications during the installation process.



NOTE:
DURING INSTALLATION AND INFLATION, ENSURE THAT THE LOWER BLACK RING IS SEATED PROPERLY ON THE LOWER PISTON AS SHOWN.



1. ENSURE THAT THE LOWER BLACK RING IS SEATED PROPERLY ON THE LOWER PISTON OF THE AIR SPRING USING THE FIGURE BELOW AS AN EXAMPLE. IT WILL REMAIN SEATED IN THIS WAY DURING THE ENTIRE INSTALLATION AND INFLATION PROCESS. (FIGURE 9)



FIGURE 9

2. REMOVE THE SHIPPING PIN FROM THE NEW ARNOTT AIR SPRING. (FIGURE 10)



FIGURE 10

3. INSTALL THE NEW ARNOTT AIR SPRING INTO THE VEHICLE. ENSURE THE SPRING IS SEATED SECURELY IN THE CORRECT ORIENTATION. (FIGURES 11, 12)



FIGURE 11

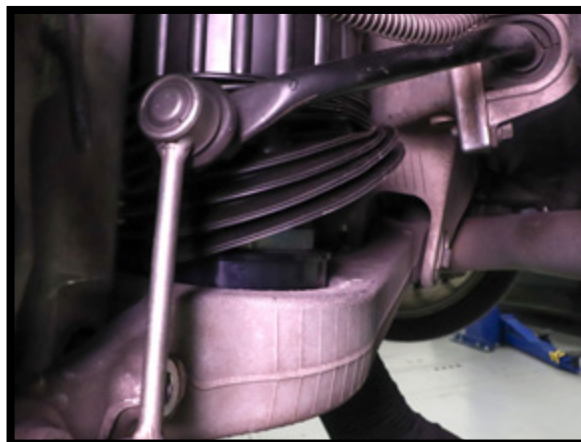


FIGURE 12

4. RECONNECT THE AIR SPRING ELECTRICAL CONNECTION. (FIGURES 13, 14)

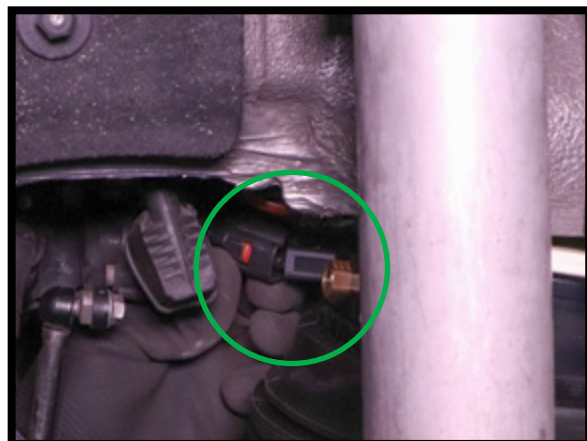


FIGURE 13



FIGURE 14

5. INSTALL THE AIR LINE BY PUSHING THE LINE INTO THE FITTING UNTIL IT IS FIRMLY SEATED. (FIGURES 15, 16)

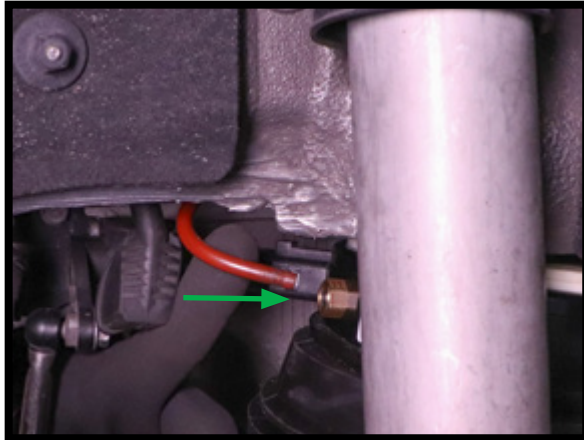


FIGURE 15

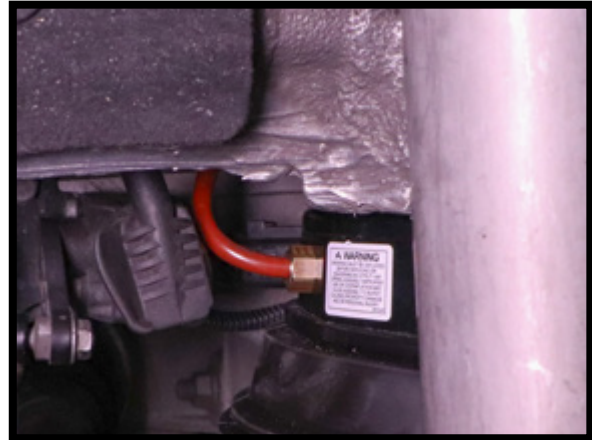


FIGURE 16

6. START VEHICLE AND ENSURE AIR SPRING IS PROPERLY SEATED AS IT AIRS UP.
7. REINSTALL THE WHEEL. TIGHTEN TO MANUFACTURER'S SPECIFICATIONS.
8. LOWER THE VEHICLE UNTIL THE WHEELS TOUCH THE GROUND. ENSURE AIR SPRING IS PROPERLY SEATED. LOWER VEHICLE COMPLETELY.
9. INSTALLATION COMPLETE.