

# Installation Manual

AS-3235  
ARNOTT  
NEW FRONT RIGHT AIR STRUT  
2011-2017 PORSCHE CAYENNE (92A)



Congratulations on your purchase of an Arnott® air suspension product. We at Arnott Incorporated are proud to offer a high quality product at the industry's most competitive pricing. Thank you for your confidence in us and our product.

Proper installation is essential to experience and appreciate the benefits of this system. Please take a moment to review these installation instructions before you begin to install these components on your vehicle. The removal and installation of air suspension products should only be performed by a fully qualified, ASE Certified, professional.

It is equally important to be aware of all necessary safety measures while installing your new Air Suspension System. This includes proper lifting and immobilizing of the vehicle and isolation of any stored energy to prevent personal injury or property damage.

**"Engineered to Ride, Built to Last®"**



**WARNING:** *The air suspension system is under pressure (up to 10 bar, or 150 lbf/in). Verify pressure has been relieved and disconnect power to the air suspension system prior to disassembly. Do not allow dirt or grease to enter the system. Always wear standard hand, ear, and eye protection when servicing the air suspension system.*

**Arnott® is committed to the quality of its products. If you have a question or problem with any Arnott product, please contact Arnott by calling 800-251-8993 during normal business hours or email [techassistance@arnottinc.com](mailto:techassistance@arnottinc.com). (In the EU please call +31 (0)73 7850 580 or email [info@arnotteurope.com](mailto:info@arnotteurope.com))**

## GENERAL INFORMATION:

*Reading this manual signifies your agreement to the terms of the general release, waiver of liability, and hold harmless agreement, the full text of which is available at [www.arnottinc.com](http://www.arnottinc.com).*

- Not to be stored below 5°F (-15°C) or above 122°F (50°C).
- Avoid damage to air lines and cables.
- Removal and installation is only to be performed by fully qualified personnel.
- Use car manufacturer's diagnostic software.

**CAUTION:** *Damage to the vehicle and air suspension system can be incurred if work is carried out in a manner other than specified in the instructions or in a different sequence.*



*To avoid the possibility of short circuits while working with electric components consult your owner's manual on how to disconnect your battery.*



*Consult your vehicle owner's manual, service manual, or car dealer for the correct jacking points on your vehicle and for additional care, safety and maintenance instructions. Under no circumstances should any work be completed underneath the vehicle if it is not adequately supported, as serious injuries and death can occur.*



*This vehicle contains a "Closed Air Supply System". Replacement of components requires proper adherence to procedures set forth within OE servicing literature. Failure to comply with the OE prescribed procedures can result in component damage and/or failure.*

## AIR STRUT REMOVAL

1. SET STEERING TO STRAIGHT AHEAD.
2. RAISE VEHICLE.
3. REMOVE FRONT WHEEL. (FIGURE 1)



FIGURE 1

4. OPEN HOOD AND REMOVE APPLICABLE ENGINE BAY TRIM TO ACCESS THE STRUT'S TOP MOUNT AND ELECTRICAL CONNECTOR. (FIGURES 2, 3, 4)



FIGURE 2

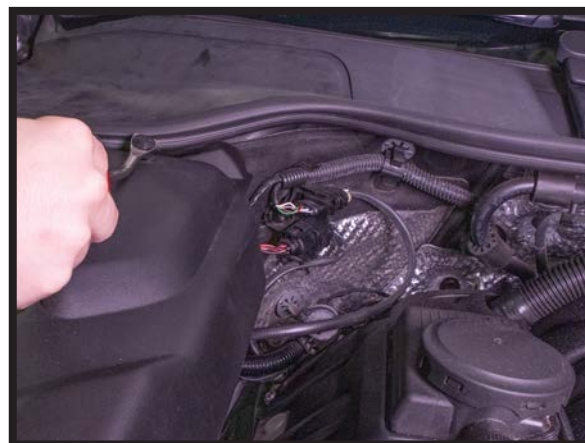


FIGURE 3



FIGURE 4



5. REMOVE ENGINE STRUT DAMPER. (FIGURES 5, 6, 7)

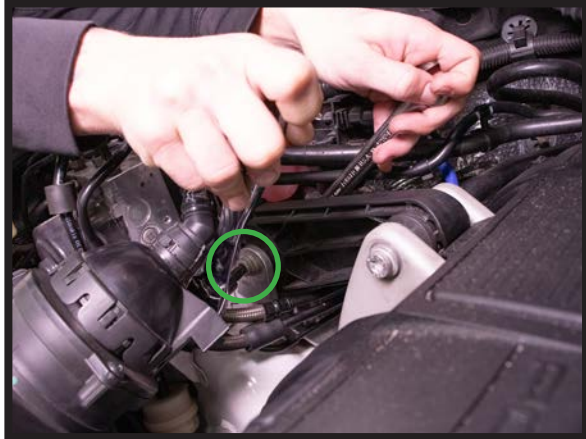


FIGURE 5



FIGURE 6



FIGURE 7

6. DISCONNECT THE ELECTRICAL CONNECTION TO THE STRUT. (FIGURES 8, 9)



FIGURE 8



FIGURE 9

7. LOOSEN AND REMOVE THE STRUT'S TOP MOUNTING NUTS. (FIGURE 10)



FIGURE 10

8. LOOSEN AND REMOVE AIR LINE, THEN REMOVE AND DISCARD OE AIR FITTING. (FIGURES 11, 12)



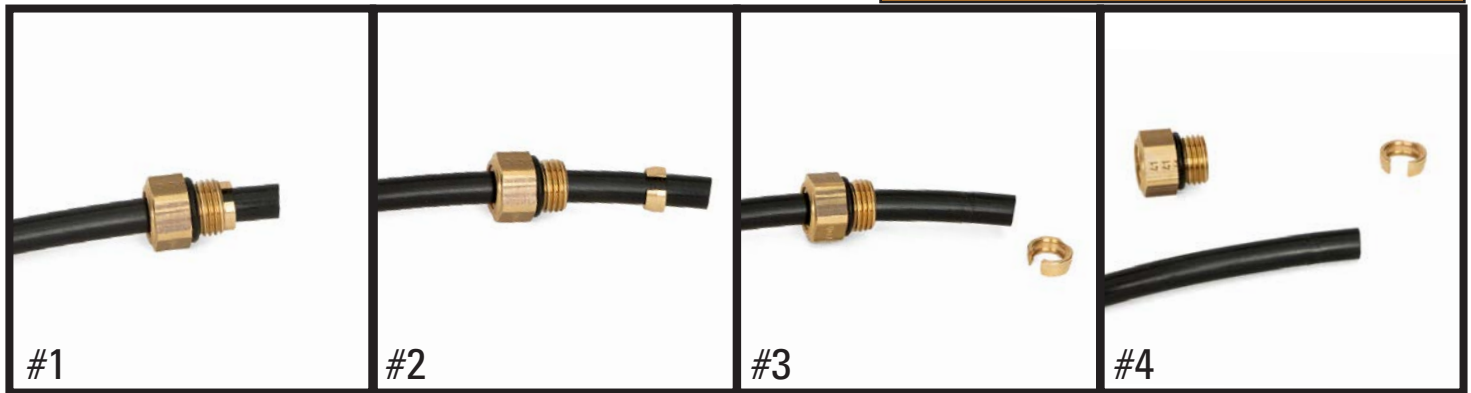
FIGURE 11

## OE AIR FITTING REMOVAL



PRIOR TO INSERTING THE EXISTING AIR LINE INTO THE NEW AIR FITTING YOU WILL NEED TO REMOVE THE OLD ORIGINAL EQUIPMENT AIR LINE FITTING.

**NOTE:** SCRATCHES AND/OR DEEP CUTS IN THE AIR LINE CAN RESULT IN POSSIBLE LEAKS. INSPECT THE AIR LINE BEFORE INSERTION. AIR LINE NEEDS TO BE REPLACED IF DAMAGED.



#1  
OE AIR LINE FITTING

#2  
SLIDE THE THREADED PORTION UP THE LINE AND SPREAD THE COLLET OPEN TO REMOVE

#3  
SLIDE THE AIR FITTING OFF OF THE AIR LINE

#4  
AIR LINE IS READY FOR INSTALLATION

FIGURE 12

9. DISCONNECT THE HEIGHT SENSOR LINKAGE. (FIGURES 13, 14)



FIGURE 13



FIGURE 14



10. DISCONNECT THE BRAKE HOSE GROMMET. (FIGURE 15)



FIGURE 15

11. DISCONNECT THE ABS SENSOR GROMMET AND CONNECTION. (FIGURES 16, 17)



FIGURE 16



FIGURE 17

12. SEPARATE THE BALL JOINT FROM THE SPINDLE ASSEMBLY. (FIGURES 18, 19)



FIGURE 18



FIGURE 19

13. LOOSEN AND REMOVE THE TOP SWAY BAR END LINK BOLT AND NUT. (FIGURES 20, 21)



FIGURE 20



FIGURE 21

14. LOOSEN THE BOTTOM SWAY BAR END LINK NUT, BUT DO NOT REMOVE. (FIGURE 22)

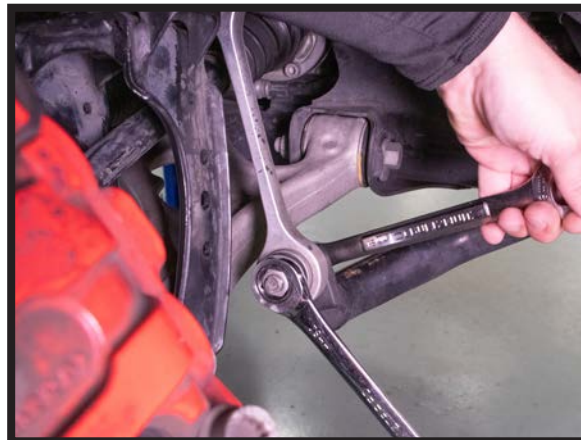


FIGURE 22

15. LOOSEN AND REMOVE THE LOWER STRUT BOLT. (FIGURES 23, 24)

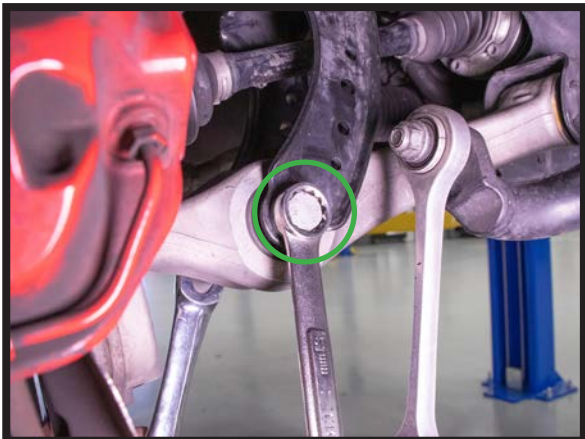


FIGURE 23

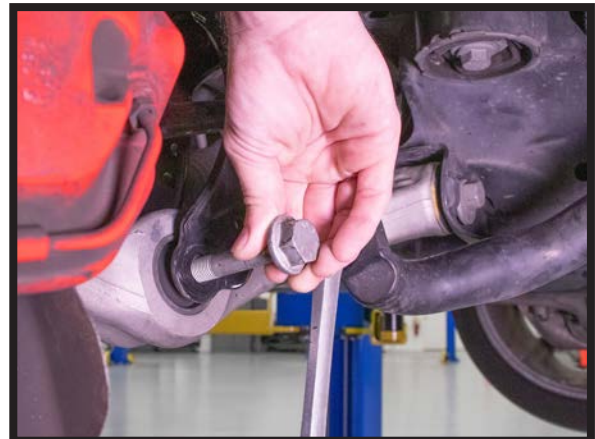


FIGURE 24



16. REMOVE STRUT FROM VEHICLE. (FIGURE 25)



FIGURE 25

17. REMOVAL COMPLETE.

## AIR STRUT INSTALLATION



*Tighten all nuts and bolts to manufacturer's specifications during the installation process.*

1. INSTALL THE NEW ARNOTT AIR STRUT INTO THE VEHICLE. (FIGURE 23)



FIGURE 23

2. REINSTALL THE LOWER STRUT MOUNTING BOLT AND TIGHTEN TO MANUFACTURER'S SPECIFICATIONS. (FIGURES 24, 25)

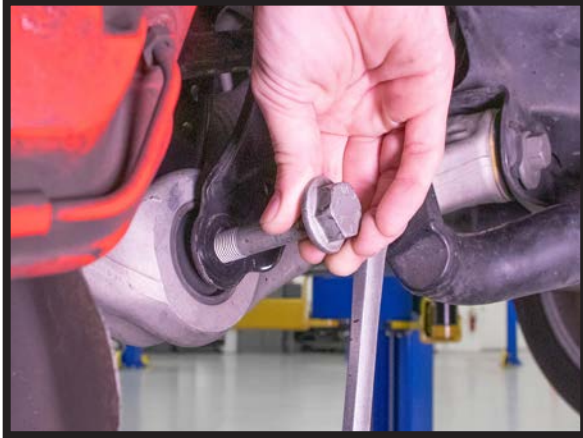


FIGURE 24



FIGURE 25

3. REINSTALL THE TOP SWAY BAR END LINK BOLT AND NUT AND TIGHTEN TO MANUFACTURER'S SPECIFICATIONS. (FIGURES 26, 27)



FIGURE 26



FIGURE 27

4. TIGHTEN THE BOTTOM SWAY BAR END LINK NUT TO MANUFACTURER'S SPECIFICATIONS. (FIGURE 28)



FIGURE 28

5. REINSTALL THE UPPER BALL JOINT NUT AND TIGHTEN TO MANUFACTURER'S SPECIFICATIONS. (FIGURES 29, 30)



FIGURE 29



FIGURE 30

6. RECONNECT BRAKE LINE AND ABS SENSOR WIRE GROMMETS. (FIGURES 31, 32)



FIGURE 31

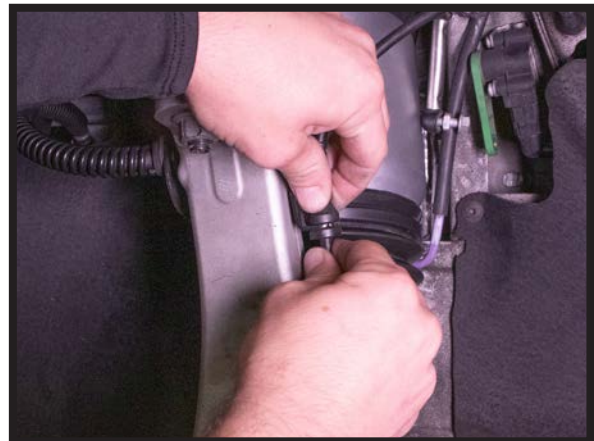


FIGURE 32



7. RECONNECT THE ABS SENSOR WIRE. (FIGURE 33)



FIGURE 33

8. RECONNECT THE HEIGHT SENSOR LINKAGE AND TIGHTEN TO MANUFACTURER'S SPECIFICATIONS. (FIGURES 34, 35)



FIGURE 34



FIGURE 35

9. INSTALL ARNOTT AIR FITTING TO EXISTING AIR HOSE. (FIGURE 36)

## ARNOTT AIR FITTING INSTALLATION

**NOTE:** SCRATCHES AND/OR DEEP CUTS IN THE AIR LINE CAN RESULT IN POSSIBLE LEAKS. INSPECT THE AIR LINE BEFORE INSERTION. AIR LINE NEEDS TO BE REPLACED IF DAMAGED.

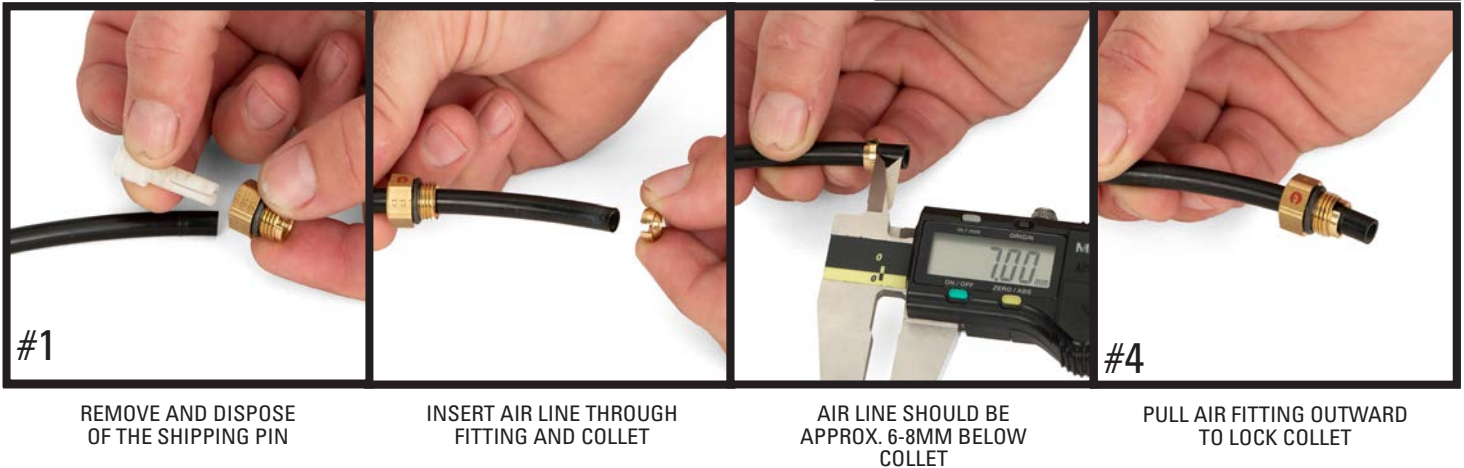


FIGURE 36

10. REINSTALL THE AIR LINE AND TIGHTEN TO MANUFACTURER'S SPECIFICATIONS. (FIGURE 37)



FIGURE 37

11. INSTALL THE THREE SUPPLIED TOP STRUT MOUNTING NUTS AND TIGHTEN TO MANUFACTURER'S SPECIFICATIONS. (FIGURE 38)



FIGURE 38

12. RECONNECT THE AIR STRUT'S ELECTRICAL CONNECTION. (FIGURE 39)



FIGURE 39



13. REINSTALL ENGINE STRUT DAMPER. (FIGURES 40, 41, 42)



FIGURE 40



FIGURE 41

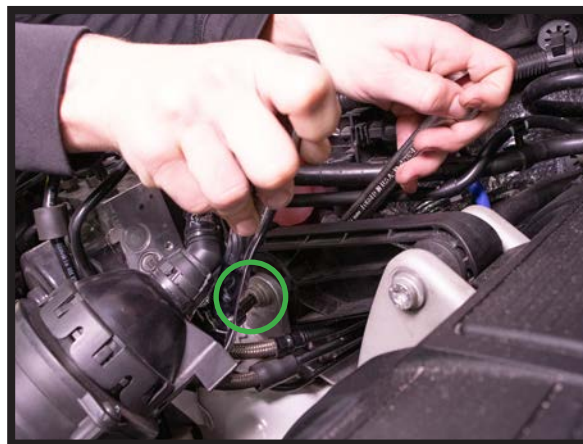


FIGURE 42

14. UNDER THE HOOD, REINSTALL THE SIDE TRIM COVER. (FIGURE 43)



FIGURE 43

15. CLOSE THE HOOD.  
16. REINSTALL THE WHEEL.  
17. LOWER THE VEHICLE.  
18. INSTALLATION COMPLETE.